



**Nature**  
**Observation**  
Photo Guide  
自然观察指南





# Nature Observation Photo Guide

## 自然观察指南

### 北师大港浸大校园及周边生物多样性 Biodiversity in UIC and the surrounding area

北师大港浸大校园及周边拥有丰富的生物多样性。校园及周边环境为多类野生生物提供重要的栖息地。自2018年起，我们记录有：

- 66 种鸟类(其中9种是国家二级保护动物)
- 38 种蝴蝶
- 25 种蜻蜓和豆娘
- 9 种两栖类

UIC has an rich biodiversity. The campus and the surrounding area are the home to various types of wildlife. Since 2018, we have recorded:

- 66 bird species. 9 of them are under second-class state protection.
- 38 butterfly species
- 25 dragonfly and damselfly species
- 9 amphibian species







# 鸟类篇 Bird



# 北师港浸大校园鸟类 UIC Birds

中文名 Chinese Name	英文名 English Name	学名 Scientific Name
小鸕鷀	Little Grebe	<i>Tachybaptus ruficollis</i>
苍鹭	Grey Heron	<i>Ardea cinerea</i>
池鹭	Chinese Pond-Heron	<i>Ardeola bacchus</i>
夜鹭	Black-crowned Night Heron	<i>Nycticorax nycticorax</i>
白鹭	Little Egret	<i>Egretta garzetta</i>
牛背鹭	Cattle Egret	<i>Bubulcus ibis</i>
大白鹭	Great Egret	<i>Ardea alba</i>
黄斑苇鳉	Yellow Bittern	<i>Ixobrychus sinensis</i>
栗苇鳉	Cinnamon Bittern	<i>Ixobrychus cinnamomeus</i>
紫背苇鳉	Schrenck’s Bittern	<i>Ixobrychus eurhythmus</i>
黑鸢*	Black Kite	<i>Milvus migrans</i>
普通鵟*	Common Buzzard	<i>Buteo buteo</i>
蛇雕*	Crested serpent eagle	<i>Spilornis cheela</i>
凤头鹰*	Crested Goshawk	<i>Accipiter trivirgatus</i>
雀鹰*	Eurasian Sparrowhawk	<i>Accipiter nisus</i>

标识\*号的鸟类为国家二级保护动物。  
The species marked with \* are under second-class state protection.

中文名 Chinese Name	英文名 English Name	学名 Scientific Name
白胸苦恶鸟	White-breasted Waterhen	<i>Amauornis phoenicurus</i>
黑水鸡	Common Moorhen	<i>Gallinula chloropus</i>
白喉斑秧鸡	Slaty-legged Crake	<i>Rallina eurizonoides</i>
矶鹬	Common Sandpiper	<i>Actitis hypoleucos</i>
珠颈斑鸠	Spotted Dove	<i>Spilopelia chinensis</i>
绿翅金鸠	Emerald Dove	<i>Chalcophas indica</i>
鹰鹃	Large Hawk Cuckoo	<i>Hierococcyx sparverioides</i>
四声杜鹃	Indian Cuckoo	<i>Cuculus micropterus</i>
八声杜鹃	Plaintive Cuckoo	<i>Cacomantis merulinus</i>
噪鹃	Asian Koel	<i>Eudynamys scolopaceus</i>
褐翅鸦鹃*	Greater Coucal	<i>Centropus sinensis</i>
领角鸮*	Collared scops owl	<i>Otus lettia</i>
斑头鸺鹠*	Asian barred owlet	<i>Glaucidium cuculoides</i>
普通翠鸟	Common Kingfisher	<i>Alcedo atthis</i>
小白腰雨燕	Little Swift	<i>Apus nipalensis</i>



# 北师港浸大校园鸟类 UIC Birds

中文名 Chinese Name	英文名 English Name	学名 Scientific Name
家燕	Barn Swallow	<i>Hirundo rustica</i>
金腰燕	Red-rumped Swallow	<i>Hirundo daurica</i>
麻雀	Eurasian Tree Sparrow	<i>Passer montanus</i>
树鸚	Oliva-back Pipit	<i>Anthus hodgsoni</i>
灰鹊鸂	Grey Wagtail	<i>Motacilla cinerea</i>
白鹊鸂	White Wagtail	<i>Motacilla alba</i>
红耳鹎	Red-whiskered Bulbul	<i>Pycnonotus jocosus</i>
白头鹎	Light-vented Bulbul	<i>Pycnonotus sinensis</i>
白喉红臀鹎	Sooty-headed bulbul	<i>Pycnonotus aurigaster</i>
鹊鸂	Oriental Magpie-Robin	<i>Copsychus saularis</i>
东亚石鸂	Stejneger's Stonechat	<i>Saxicola stejnegeri</i>
灰林鸂	Grey Bushchat	<i>Saxicola ferrea</i>
北红尾鸂	Daurian Redstart	<i>Phoenicurus auroreus</i>
蓝矶鸂	Blue Rock Thrush	<i>Monticola solitarius</i>
灰背鸂	Grey-backed Thrush	<i>Turdus hortulorum</i>

中文名 Chinese Name	英文名 English Name	学名 Scientific Name
乌鸂	Chinese Blackbird	<i>Turdus mandarinus</i>
黄腹山鸂莺	Yellow-bellied Prinia	<i>Prinia flaviventris</i>
矛斑蝗莺	Lanceolated Warbler	<i>Locustella lanceolata</i>
褐柳莺	Dusky Warbler	<i>Phylloscopus fuscatus</i>
黄眉柳莺	Yellow-browed Warbler	<i>Phylloscopus inornatus</i>
长尾缝叶莺	Common Tailorbird	<i>Orthotomus sutorius</i>
黑脸噪鹛	Masked Laughingthrush	<i>Garrulax perspicillatus</i>
画眉*	Hwamei	<i>Garrulax canorus</i>
远东山雀	Japanese Tit	<i>Parus minor</i>
叉尾太阳鸟	Fork-tailed Sunbird	<i>Aethopyga christinae</i>
暗绿绣眼鸟	Swinhoe's White-eye	<i>Zosterops simplex</i>
棕背伯劳	Long-tailed Shrike	<i>Lanius schach</i>
喜鹊	Oriental Magpie	<i>Pica serica</i>
红嘴蓝鹊	Blue Magpie	<i>Urocissa erythrorhyncha</i>
大嘴乌鸦	Large-billed Crow	<i>Corvus macrorhynchos</i>

标识\*号的鸟类为国家二级保护动物。  
The species marked with \* are under second-class state protection.

# 北师港浸大校园鸟类 UIC Birds

中文名 Chinese Name	英文名 English Name	学名 Scientific Name
丝光椋鸟	Red-billed Starling	<i>Sturnus sericeus</i>
黑领椋鸟	Black-collared Starling	<i>Gracupica nigricollis</i>
八哥	Crested Myna	<i>Acridotheres cristatellus</i>
金翅雀	Grey-capped Greenfinch	<i>Carduelis sinica</i>
斑文鸟	Scaly-breasted Munia	<i>Lonchura punctulata</i>
白腰文鸟	White-rumped Munia	<i>Lonchura striata</i>



# 小鸕鷀

Little Grebe

*Tachybaptus ruficollis*

---

- 形似鸭子的小型水鸟。颜色整体偏黑，能观察到浅色嘴角。繁殖期偏褐色，脸颊转为红色。喜在平静水域潜水觅食。

- Small waterfowl like duckling. The body is whole black with a white squat. In breeding season, body colors turns brown and face color turns red. Prefer foraging food in calm water.





# 池鹭

Chinese Pond-Heron

*Ardeola bacchus*

---

- 白腹褐背的小型鹭，头顶栗红。嘴前端黑色后基偏黄，脚黄色。飞行时双翼白色。繁殖期头部具饰羽。喜稻田、池塘等水域。

- Small egret that white abdomen and brown back. Top of head is red, beak tip in black and base is yellow, yellow leg. Show white wings when flying. In breeding season have several feathers on head. Prefer paddy and pond habitats.





# 白鹭

Little egret

*Egretta garzetta*

---

- 体型最小的白鹭，身形修长。嘴细长全黑，腿黑色但脚趾黄色。繁殖期脸上皮肤转红色，头部具饰羽。喜各种湿地生境。

- The smallest white egret. Slim black beak, slender white body, black leg with yellow claw. In breeding season face turn to red, several feathers on head. Prefer wetland habitats.



# 黑鸢

Black Kite

*Milvus migrans*

- 
- 常见的褐色大型猛禽。飞行时可见六根向后收的翼指，背部深褐，胸腹有浅色纵斑，耳羽颜色接近黑色，尾末端呈楔形。
  - Common big brown raptor. Show six wing finger retracted backwards, brown back, light longitudinal spot on chest and abdomen, black ear feather, wedge tail.





# 白胸苦恶鸟

White-breasted Waterhen

*Amaurornis phoenicurus*

- 中等体型水鸟。额头，脸部和胸腹部白，背黑色，下腹和尾羽棕褐色，脚淡黄。喜近水林地，繁殖期发出“苦啊、苦啊”叫声。
- Medium sized waterfowl. White forehead and face as well as chest and abdomen, black back, brown lower abdomen and tail feather, yellow leg. Prefer woodland near water, make 'Ku-wa--' sounds in breeding seasons.





# 矶鹬

Common Sandpiper

*Actitis hypoleucos*

---

- 小型鸟。嘴黑色细长，头及背部灰褐色，具黑色贯眼纹，胸腹部白色。喜各种近水生境，头和尾常上下摆动。
- Small bird. Slim black beak, brown head and back, black stripe crosses eyes, white chest. Prefer several near water habitats, often wag tail and head.





# 珠颈斑鸠

Spotted Dove

*Spilopelia chinensis*

---

- 形似鸽子的中型鸟。身体大部分为褐灰色，颈侧有珍珠状黑白点斑，飞行时尾部呈扇状。适应各种人类居住环境。

- Medium sized bird like pigeon. Brownish gray on most body colors, pearly white spots color on neck, show fan-shaped tails when flying. Prefer most of the human active place.





# 八声杜鹃

Plaintive Cuckoo

*Cacomantis merulinus*

- 中体型鸟。雄鸟头颈及上胸部灰色，腹部橙红，背部深褐色，尾长而白有黑色带斑。雌鸟及幼鸟羽色偏红褐，遍布深色横纹。喜林地，栖息于树冠层。

- Medium sized forest bird. The male is grey on upper chest and top of head, orange abdomen, brown back, long white tail with black stripes. The female and the young are brownish with dark color stripes in whole body. Prefer woodland habitats, inhabitant in the forest canopy.





# 噪鹛

Asian Koel

*Eudynamys scolopacea*

---

- 中体型林鸟。眼红色，雄鸟成鸟通体深蓝黑色具金属光泽，亚成鸟有密集白点斑过度至纯黑。雌鸟全身褐色，有密集白点斑。栖息于稠密林地，叫声逐渐升高。

- Medium sized forest bird. Red eyes, the whole body colors of male adult bird are dark blue with metallic luster. Young bird has lots of white spots that gradually turn to whole black. The female birds are whole brown with dense white spots. Inhabitat in thickset, tweet gradually rising.





# 褐翅鸦鹃

Greater Coucal

*Centropus sinensis*

---

- 较大体型的林鸟。头黑色，眼红色，颈蓝黑，翅膀褐红，尾长而黑。喜各种林地生境，在地面活动。

- Big sized forest bird. Black head, red eyes, dark blue neck, long black tail. Prefer several woodland habitats, activities on land.



# 普通翠鸟

Common Kingfisher

*Alcedo atthis*

---

- 蓝橙相间的小型水鸟。头颈至背部蓝色具金属光泽，眼旁有橙色斑，胸腹部橙红色。雄鸟喙全黑，雌鸟下喙红色。幼鸟色暗淡浑浊。喜临水生境。

- Small blue and orange bird. Blue with metallic luster on back and top of head, an orange spot near the eye, orange red chest and abdomen. The male beak is whole black, but the female beak is red on the lower beak. Young bird color turbid. Prefer wetland habitats.





# 家燕

Barn Swallow

*Hirundo rustica*

- 小型常见鸟。头及背部蓝黑色具金属光泽，喉红褐色，喉下有蓝色横带，腹部纯白。尾长细，深分叉。栖息于人类活动地。
- Small common bird. Dark blue head and back with metallic luster, red throat with a blue stripe underneath, white abdomen. Slim deep split tail. Inhabitat with human.



# 麻雀

Eurasian Tree Sparrow

*Passer montanus*

---

- 头部褐色，头侧白色，耳部有黑斑，背部褐色有黑色纵纹。成鸟主要以谷粒，植物种子和果实等植物为食，幼鸟主要以昆虫和昆虫幼虫为食。主要栖息在人类居住环境附近的树丛中。

- Brown head with white feathers on the side, ears have black spots and the black longitudinal stripe on the brown back. Adults feed mainly on grains, seeds and fruits, while young birds feed on insects and insect larvae.





# 树鹀

Oliva-back Pipit

*Anthus hodgsoni*

- 
- 中等体型的林鸟。喙细而短，眼部上下有黑色条斑，翅及背部灰褐色，胸腹部白色，前胸有密集黑色纵纹。喜林地生境。
  - Medium sized forest bird. Slim and short beak, black stripes surrounded eye, taupe wings and back, white chest and abdomen with dense black stripes on chest. Prefer woodland habitats.



# 白鹡鸰

White Wagtail

*Motacilla alba*

---

- 中等体型林鸟。喙黑而细，头顶黑色，胸前黑色，下腹部白色。颜色分布取决于亚种。栖息于近水的各种生境，同时常见于人类活动区域。

- Medium sized forest bird. Slim back beak, black overhead and front chest, white lower abdomen. Color distribution depends on subspecies. Prefer to inhabit in habitats near by water, common bird in human activity area.





# 红耳鹎

Red-whiskered Bulbul

*Pycnonotus jocosus*

---

- 中等体型林鸟。喙黑而短，头部有黑色冠羽竖起，脸颊有一红斑，红斑下及喉部为白色，翅及背部褐色，胸腹部白，尾下覆羽红色。喜各种林地与城市公园。

- Medium sized forest bird. Short black beak, has black crown feather overhead, two red spots on face, section under red spots and throat is white, taupe wings and back, white chest and abdomen, red tail cover feather. Prefer woodland habitats and urban park.



# 白头鹎

Light-vented Bulbul

*Pycnonotus sinensis*

---

- 中等体型林鸟。喙黑而短，额头黑色，头顶有白色短冠羽，面颊及喉部白色，翅膀和背部橄榄绿色，翅膀边缘黄色，胸部灰色，腹部白色。喜各类林地，在人类活动区域常见。

- Medium sized forest bird. Short black beak, black forehead with short white crown feather overhead, white face and throat, taupe wings and back with yellow wings edge, grey chest, white abdomen. Prefer several woodland habitats, common in human activity area.





# 白喉红臀鹎

Sooty-headed bulbul

*Pycnonotus aurigaster*

---

- 中等体型林鸟。喙黑而短，头部黑色冠羽较短，脸颊及颈部白色，胸腹部白色，翅膀、背部以及尾部黑色，尾下覆羽红色。喜各类林地生境。

- Medium sized forest bird. Short black beak, short black crown feather overhead, white face and neck, white chest and abdomen, black wings, back and tail, red tail cover feather. Prefer several woodland habitats.



# 鹊鸂

Oriental Magpie Robin

*Copsychus saularis*

---

- 头顶至尾上为黑色，两翼有明显白色翼斑，腹部为白色。栖息于丛林，树林中的开阔地带。
- Black color from overhead to tail, white bar on wings, white abdomen. They like to live in forest open area.





# 北红尾鸲

Daurian Redstart

*Phoenicurus auroreus*

---

- 小型鸟类，雄鸟的头顶灰白色，背部与两翅黑色，有明显的白色翼斑，腰、腹、尾部橙棕色；雌鸟背部褐色，腹部黄褐色。栖息于低矮树丛中，以昆虫为食。

- Small bird, the male bird has grey head, black back, black wings with white spots. Orange waist, abdomen and tail. The female bird has brown back and tan abdomen. They like to live in bush, and feed on insects.



# 乌鸫

Common Blackbird  
*Turdus mandarinus*

---

- 全身为黑色，灰黑色，嘴黄色，雄鸟眼周橙黄色，雌鸟和幼鸟没有黄色眼圈。栖息于林区外围。是杂食性鸟类，食物包括昆虫，种子和浆果。

- Whole body is black and dark grey, yellow beak, the male bird has yellow eye socket but the female bird and young bird haven't. they like to live in forest edge. Omnivorous, feeds on insects, seeds and berries.





# 长尾缝叶莺

Common Tailorbird

*Orthotomus sutorius*

---

- 前额和头顶红棕色，上体橄榄绿色，下体白色。尾长，常竖起。喙部尖细，能够缝制树叶做成杯状巢。多见于稀疏林地。叫声响亮且不断重复。

- Red-brown forehead and overhead, its upper body is olive green and lower body is white. Long tail often erect. Slim and sharp beak can sew leaves to cup shape nest. Common in sparse woodland. Tweet loud and repeated.



# 黑脸噪鹛

Masked Laughingthrush

*Garrulax perspicillatus*

---

- 中型鸟类。头部灰色，眼睛周围黑色及其醒目如带黑色眼罩，背部灰褐色，腹部白色。主要栖息于灌丛与竹林中，也在庭院，农田附近活动。杂食鸟类，主要以昆虫为食。

- Medium sized bird. Grey head, black eye socket like a eye mask, taupe back and white abdomen. They like to live in bush or bamboo, common in yard and field. Omnivorous but often feeds on insects.





# 远东山雀

Japanese Tit

*Parus minor*

---

- 中小型鸟类。头部除了头两侧的大型白斑，皆为黑色。上体以绿色和蓝灰色为主，下体白色。喜欢栖息于低海拔地区的树林中，也栖息于人工林中。以金花虫，蚂蚁，蜂等昆虫为食。

- Small and medium-sized black bird, have big white spots on the side of head. It is green and blue-gray on the upper body and white on the lower body. They like to live in forests in the low altitude area and artificial forests. It feeds on golden flower insects, ants, bees and other insects.



# 暗绿绣眼鸟

Swinhoe's White-eye

*Zosterops simplex*

---

- 小型鸟类，上体绿色，腹部白色，眼睛周围有极为醒目的白色眼圈。主要栖息于森林中，也栖息于果园，或村庄附近的高树上。夏季主要捕食昆虫，冬季以植物性食物为主。

- Small birds have green back, white abdomen and striking white circles around the eyes. They live mainly in forests, but also in orchards or tall trees near villages. They eat insects for food in summer and plants in winter.





# 棕背伯劳

Long-tailed Shrike

*Lanius schach*

---

- 中型猛禽。头部灰色，戴宽大的黑色眼罩，背部红棕色，嘴粗壮带钩，尾长呈黑色。栖息于低山丘陵和山脚平原地区，有很强的领地意识。善于捕食昆虫，也能够捕食小鸟。

- Medium sized raptor. Grey head with black eye mask, red-brown back, strong hook beak, black tail. They like to live in low hills and foothill plain, strong sense of territory. Feeds on insects and small birds.



# 喜鹊

Oriental Magpie

*Pica serica*

---

- 头部至尾部为黑色，并呈现绿色光泽，腹部白色，翼肩上有大型白斑，在飞行时翅膀边缘白色更加明显。杂食性鸟类，喜欢成对居住在民宅旁边的大树上。

- The head to tail is black with a green sheen, the abdomen is white. There are large white spots on the wing shoulders which can be obviously seen during fly. Omnivorous birds, like living in pairs in the trees next to the houses.





# 黑领椋鸟

Black-collared Starling  
*Sturnus nigricollis*

---

- 主要为黑白两色的大型椋鸟，具有宽阔的黑色颈圈。成对或成群栖息于荒地、农田等开阔地带。觅食多在地上，主要以甲虫、蝗虫等昆虫为食。可学习发声说话。
- Large starlings, chiefly black and white, with wide black collar feather. They live in pairs or groups in the open area such as wasteland and farmland. Foraging on the ground, mainly eat beetles, locusts and other insects. It can learn to make sound.





# 斑文鸟

Scaly-breasted Munia

*Lonchura punctulata*

---

- 小型鸟类。背部褐色，腹部白色有明显的红褐色鳞状斑，喙短而粗厚。栖息于低海拔地区的农田河谷等地。多成群活动，以谷粒等农作物为食，繁殖期间也吃昆虫。

- Small birds have brown back, white abdomen with distinct reddish-brown squamous patches and short thick bill. They live in the farmland, valley and other places in the low altitude area. They act in group and, feed on crops such as grains, and eat insects during reproduction.







# 蝴蝶篇

## Butterfly



# 北师港浸大校园蝴蝶 UIC Butterflies

中文名 Chinese Name	英文名 English Name	学名 Scientific Name
青凤蝶	Common Bluebottle	<i>Graphium sarpedon</i>
木兰青凤蝶	Common Jay	<i>Graphium doson</i>
统帅青凤蝶	Tailed Jay	<i>Graphium agamemnon</i>
绿凤蝶	Five-bar Swordtail	<i>Pathysa antiphates</i>
斑凤蝶	Common Mime	<i>Chilasa clytia</i>
玉斑凤蝶	Red Helen	<i>Papilio helenus</i>
玉带凤蝶	Common Mormon	<i>Papilio polytes</i>
美凤蝶	Great Mormon	<i>Papilip memnon</i>
蓝凤蝶	Spangle	<i>Papilio protenor</i>
碧凤蝶	Chinese Peacock	<i>Papilio bianor</i>
巴黎翠凤蝶	Paris Peacock	<i>Papilio paris</i>
报喜斑粉蝶	Red-base Jezebel	<i>Delias pasithoe</i>
东方菜粉蝶	Indian Cabbage White	<i>Pieris canidia</i>
菜粉蝶	Small Cabbage White	<i>Pieris rapae</i>
梨花迁粉蝶	Mottled Emigrant	<i>Catopsilia pyranthe pyranthe</i>

中文名 Chinese Name	英文名 English Name	学名 Scientific Name
宽边黄粉蝶	Common Grass Yellow	<i>Eurema hecabe</i>
斜斑彩灰蝶	Purple Sapphire	<i>Heliophorus epicles</i>
亮灰蝶	Long-tailed Blue / Pea Blue	<i>Lampides boeticus</i>
酢酱灰蝶	Pale Grass Blue	<i>Pseudozizeeria maha</i>
曲纹紫灰蝶	Plain Cupid	<i>Chilades pandava</i>
波蚬蝶	Punchinello	<i>Zemeros flegyas</i>
蛇目褐蚬蝶	Plum Judy	<i>Abisara echerius</i>
翠袖锯眼蝶	Common Palmfly	<i>Elymnias hypermnestra</i>
小眉眼蝶	Dark-banded Bush Brown	<i>Mycalesis mineus</i>
串珠环蝶	Large Faun	<i>Faunis eumeus</i>
波蛱蝶	Angled Castor	<i>Ariadne ariadne</i>
美眼蛱蝶	Peacock Pansy	<i>Junonia almana</i>
幻紫斑蛱蝶	Great Egg-fly	<i>hypolimnas bolina</i>
金斑蛱蝶	Danaid Egg-fly	<i>Hypolimnas misippus</i>
中环蛱蝶	Common Sailer	<i>Neptis hylas</i>



# 北师港浸大校园蝴蝶 UIC Butterflies

中文名 Chinese Name	英文名 English Name	学名 Scientific Name
相思带蛱蝶	Colour Sergeant	<i>Athyma nefte</i>
新月带蛱蝶	Staff Sergeant	<i>Athyma selenophora</i>
网丝蛱蝶	Common Mapwing	<i>Cyrestis thyodamas</i>
拟旖斑蝶	Ceylon Blue Glassy Tiger	<i>Ideopsis similis</i>
青斑蝶	Blue Tiger	<i>Tirumala limniace</i>
金斑蝶	Plain Tiger	<i>Danaus chrysippus</i>
虎斑蝶	Common Tiger	<i>Danaus genutia</i>
白伞弄蝶	Pale Awlet	<i>Bibasis gomata</i>

# 青凤蝶

Common Bluebottle

*Graphium sarpedo*

- 较大型黑色蝴蝶，其翅膀中央有一条水蓝色的带状斑纹。常见于森林中，喜欢吸食花蜜。
- Big sized black butterfly that has a turquoise band across the wings. Commonly occurs in forests and likes to sip nectar.





# 玉斑凤蝶

Red Helen

*Papilio helenus*

- 较大的黑色蝴蝶。翅膀以黑色为主，后翅有三块白色斑纹和红色的新月形斑纹，有翅尾。多在林地，公园出现，喜欢吸食花蜜。
- Big sized black butterfly. Black wings, three white stripes and several sickle red spots on hindwings, has wing tails. It occurs in woodlands and parks, and likes visiting flowers for nectar.



# 玉带凤蝶

Common Mormon

*Papilio polytes*

- 较大的黑色蝴蝶。前翅翅缘有一圈白斑。后翅整体黑色，有连成带状的一系列白色斑纹，翅尾突起明显。多在林地边缘活动。
- Big sized black butterfly. Black forewings with light white spots on the edge, black hindwings have a white band made up of white spots, tail bulge obviously. It is active in the edge of forests.



© Fanghua Li



# 巴黎翠凤蝶

Paris Peacock

*Papilio paris*

- 较大的黑色蝴蝶。有金属绿色的鳞片，后翅有两片闪蓝色斑纹。是春季较早出现的凤蝶之一。
- Big sized black butterfly. Black wings with metallic luster green scales, hindwings have wide blue stripes, tail bulge obviously. It is one of the first swallowtail to appear in spring.



# 报喜斑粉蝶

Red-base Jezebel

*Delias pasithoe*

- 较大的常见彩色蝴蝶。雄蝶翅膀背面较白，雌蝶则呈深灰色。后翅腹面有黄色和红色斑纹。
- Commonly observed big sized colorful butterfly. The upperside is white in males and deep grey in females. Hindwings have yellow and red stripes on the underside.



© Siu Tai Tsim



# 东方菜粉蝶

Indian Cabbage White

*Pieris canidia*

- 中等大小的常见白色蝴蝶。翅膀主体白色，前翅正面尖端呈黑色，有一个或两个黑色斑点。喜欢访花，多出现在菜园附近。

- Commonly observed medium sized white butterfly. White wings, the end of front wings are black; one or two black spots on the middle of front wings. It likes to visit flowers and can be usually found near vegetable fields.



© Fanghua Li

# 宽边黄粉蝶

Common Grass Yellow

*Eurema hecabe*

- 中等大小的黄色蝴蝶。翅膀主体黄色，前翅腹面中室最多有两枚黑斑，后翅腹面有零碎褐斑。在各种生境中出现。

- Medium sized yellow butterfly. Yellow wings, two black spots at most on the front wings, several brown spots on hind wings ventral surface. It occurs in various habitats.



© Siu Tai Tsim



# 酢醬灰蝶

Pale Grass Blue

*Pseudozizeeria maha*

- 平地最常见的小型蝴蝶，翅膀展开时主要为蓝色，边缘为褐色，翅膀腹面为灰色并带有小型黑斑。飞行缓慢。
- The widespread small butterfly can be seen on the ground. Wings are mainly blue with brown edge when spread; the underside of the wings are grey with small black dots. It has a slow flight.



# 蛇目褐蛱蝶

Plum Judy

*Abisara echerius*

- 体形较小的深褐色蝴蝶。翅膀主体深褐色，前后翅具连续白斑，后翅外缘具数个深色眼斑。生活在灌丛和草原。
- Small sized dark brown butterfly. Dark brown wings with several white strips cross the wings. Hindwings marked with a few dark marginal eye spots. Living in shrubs and grasslands.



© Fanghua Li



# 波蚬蝶

Punchinello

*Zemeros flegyas*

- 体形较小的棕红色蝴蝶。翅膀两侧斑纹大致相同，具密集浅色纵斑和白色点斑。翅缘呈波浪形。多生活在灌丛和草原。
- Small sized reddish brown butterfly. Patterns on the two sides of wings are essentially the same, which have dense light color stripes and white spots. Wave shape of wings edge. Mostly living in shrub and grassland.



© Fanghua Li

# 翠袖锯眼蝶

Common Palmfly

*Elymnias hypermnestra*

- 中等大小的棕色蝴蝶。翅膀主体棕色，翅膀边缘呈锯齿形，前翅末端有灰色三角斑。雄蝶后翅背面有黑色绒毛，雌蝶有四个白斑。

- Medium sized brown butterfly. Serrated wing margins, brown front wings with triangle shape grey spots on the wings end. The upperside of hindwings have fine black costal hair in males and marked 4 white marginal spots in females.





# 小眉眼蝶

Dark-banded Bush Brown

*Mycalesis mineus*

- 较小的褐色蝴蝶,常停在地面或植物上。前翅中央有一眼斑,外缘有两个眼斑。后翅外缘有七个。眼斑数目会有变化。
- Small sized brown butterfly that often stays on the ground and on plants. Brown forewing with one big centre eye spot, two small eye spots on wings edge. Hindwing has 7 marginal eye spots. The number of eye spots may vary.



© Siu Tai Tsim

# 美眼蛱蝶

Peacock Pansy

*Junonia almana*

- 翅膀背面橙褐色的蝴蝶，前后翅各有明显眼斑。翅膀腹面湿季黄褐色，有鲜艳眼斑；旱季似枯叶。多出现在草原和废气水田。

- Butterfly with brown upperside, each forewing and hindwing is marked by conspicuous eye spots. The underside is fawn with a row of colourful eye spots in wet season and mimics a dead leaf in dry season. It occurs mainly in grasslands and abandoned paddy fields.





# 中环蛱蝶

Common Sailer

*Neptis hylas*

- 中等大小的深褐色蝴蝶。翅膀背面呈深褐色，有三道白色横带。翅膀腹面则为橙色和白色相间的横带，白斑边缘有黑色幼纹。多在林缘和灌丛出现，休息时张开翅膀。

- Medium sized brown butterfly. Brown wings with three white stripes and several white spots. Orange and white stripes on ventral surface with wave shaped black stripes on the edge. It occurs in woodside area or near shrubs. At rest, wings are spread wide open.



© Fanghua Li

# 青斑蝶

Blue Tiger

*Tirumala limniace*

- 中等大小的褐色蝴蝶。翅膀腹面褐色带有许多蓝色斑点，翅缘的小蓝斑排列混乱。多在林缘出现，飞行缓慢。
- Medium sized brown butterfly. Brown underside with several blue spots, the edge of wings marked with untidy blue marginal spots. It generally occurs in woodside areas and has a slow flight.



© Siu Tai Tsim



# 虎斑蝶

Common Tiger  
*Danaus genutia*

- 较大的常见橙色蝴蝶。翅膀主体橙色，翅脉，翅缘和前翅尖呈黑色。边缘和前翅前缘有白斑。出现在各种类型的生境，喜欢访花。
- Commonly observed big sized orange butterfly. Wings are orange; wing veins, margins and forewing apexes are black. The costal area of forewing and the edge of wings marked by several white spots. It can be found in all sorts of habitats and like visiting flowers.



© Siu Tai Tsim



# 蜻蜓篇 Dragonfly





# 北师港浸大校园蜻蜓与豆娘 UIC Dragonflies and Damselflies

中文名 Chinese Name	英文名 English Name	学名 Scientific Name
杯斑小螳	Orange-tailed Midget	<i>Agriocnemis femina oryzae</i>
翠胸黄螳	Orange-tailed Sprite	<i>Ceriagrion auranticum</i>
褐斑异痣螳	Common Bluetail	<i>Iischnura senegalensis</i>
丹顶斑螳	Orange-faced Sprite	<i>Pseudagrion rubriceps rubriceps</i>
白狭扇螳	Black-kneed Featherlegs	<i>Copera ciliata</i>
黄狭扇螳	Yellow Featherlegs	<i>Copera marginipes</i>
霸王叶春蜓	Common Flangetail	<i>Ictinogomphus pertinax</i>
锥腹蜻	Asian Pintail	<i>Acisoma panorpoides</i>
蓝额疏脉蜻	Blue Dasher	<i>Brachydiplax chalybea flavovittata</i>
黄翅蜻	Asian Amberwing	<i>Brachythemis contaminata</i>
斑蓝小蜻	Black-tipped Percher	<i>Diplacodes nebulosa</i>
纹蓝小蜻	Blue Percher	<i>Diplacodes trivialis</i>
膨腹斑小蜻	Emerald Dwarf	<i>Nannophyopsis clare</i>
截斑脉蜻	Pied Percher	<i>Neurothemis tullia</i>
华丽灰蜻	Red-faced Skimmer	<i>Orthertum chrysis</i>

中文名 Chinese Name	英文名 English Name	学名 Scientific Name
吕宋灰蜻	Marsh Skimmer	<i>Orthetrum luzonicum</i>
赤褐灰蜻	Common Red Skimmer	<i>Orthetrum Pruinosum neglectum</i>
狭腹灰蜻	Green Skimmer	<i>Orthetrum sabina sanina</i>
黄蜻	Wandering Glider	<i>Pantala flavescens</i>
玉带蜻	Pied Skimmer	<i>Pseudothemis zonata</i>
三角丽翅蜻	Sapphire Flutterer	<i>Rhyothemis triangularis</i>
斑丽翅蜻	Variegated Flutterer	<i>Rhyothemis variegata arria</i>
华斜痣蜻	Saddlebag Glider	<i>Tramea virginia</i>
晓褐蜻	Crimson Dropwing	<i>Trithemis aurora</i>
庆褐蜻	Indigo Dropwing	<i>Trithemis festiva</i>

# 翠胸黄螳

*Yellow Featherlegs*

*Copera marginipes*

- 体形细小的橘黄色蜻蜓。雄虫胸部橄榄绿色，腹部橘黄，从胸部至尾部逐渐变为淡黄。雌虫颜色与雄虫类似但颜色较浅。
- Slim orange dragonfly. The female dragonfly has green thorax and orange abdomen, color from the thorax to tail end gradually turn to yellow. The color of female dragonfly similar to the male that has lighter color.





# 褐斑异痣蟌

Common Bluetail

*Ceriagrion auranticum*

- 体型较小的青黑色蜻蜓。雄性胸部青绿色具黑色条纹；腹部背侧黑色，腹侧黄色，末端具水蓝色斑；雌性部分个体体色较淡且无水蓝色斑，部分个体与雄性相同。是水田池塘边的常见种类。
- Small sized green and black dragonfly. The male has green thorax with black stripes, black back, yellow ventral side, blue tail end. The female dragonfly color brighter without the blue spots on tail.



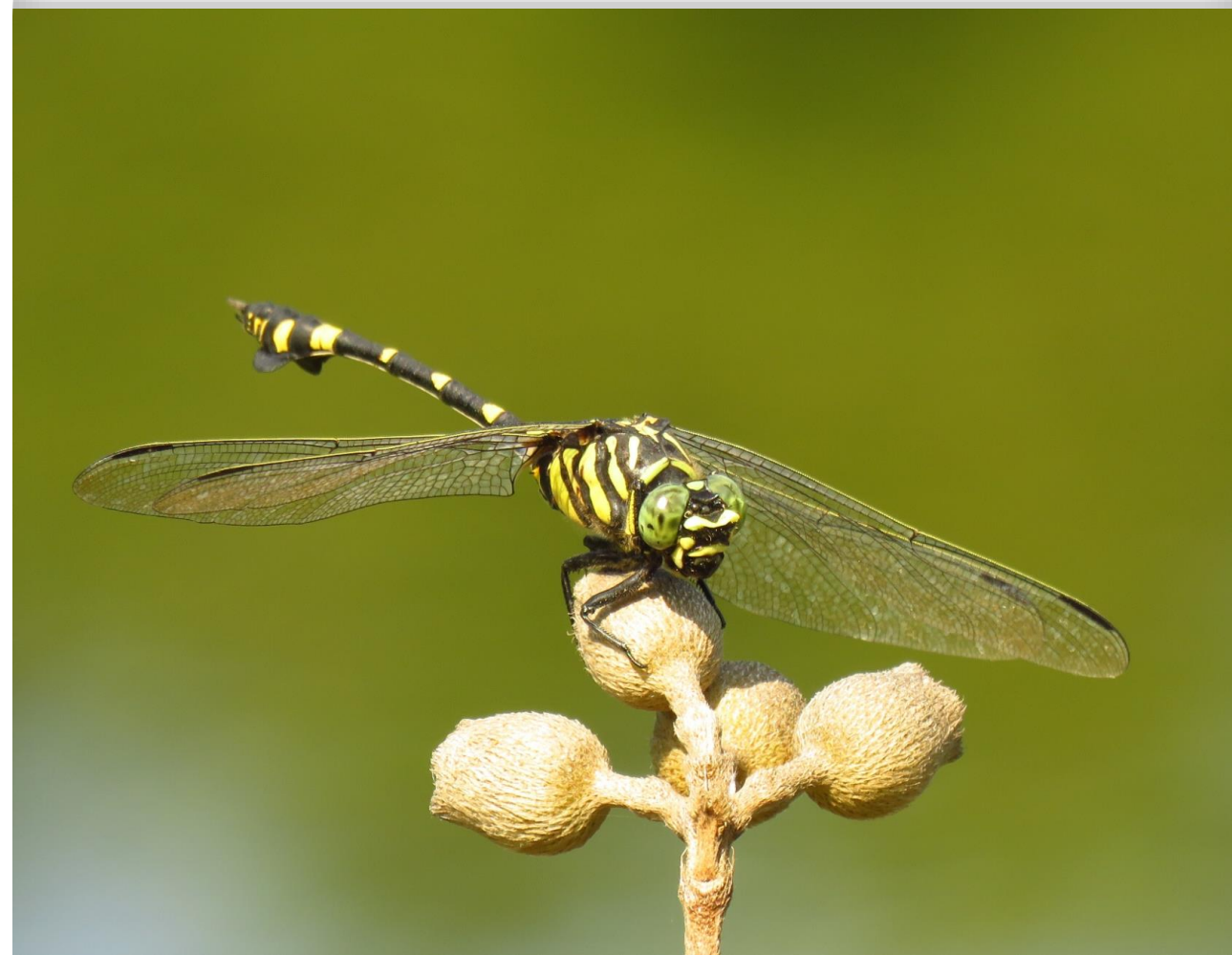
© Fanghua Li

# 霸王叶春蜓

Common Flangetail

*Ictinogomphus pertinax*

- 中等大小黑黄相间的蜻蜓。头部和胸部黑黄相间，腹部主体黑色，背面有黑色斑点，尾端粗大。翅痣黑色。
- Medium sized black and yellow dragonfly. Head and thorax is black and yellow, black abdomen with yellow spots on the back side, tail thick. Black pterostigma.





# 蓝额疏脉蜻

Common Blue Dwarf

*Brachydiplax chalybea flavovittata*

- 中等大小黑黄相间的蜻蜓。头部黄绿色，胸部黑黄相间。雌虫腹部黑色具黄斑，雄虫腹部黑色黄较少。
- Medium sized black and yellow dragonfly. Green-yellow head, black and yellow thorax. The female dragonfly has black abdomen with yellow spots, the male has black abdomen with less yellow spots.



© Fanghua Li

# 黄翅蜻

Asian Groundling

*Brachythemis contaminata*

- 体形较小黄色或橘色的蜻蜓。头部红色，胸部淡黄。雄虫腹部及翅膀橘红色。雌虫腹部淡黄色，翅膀透明。
- Medium sized yellow or orange dragonfly. Red head, light yellow thorax. The male has orange abdomen and wings. The female has light yellow abdomen, wings transparent.



© Fanghua Li



# 截斑脉蜻

Pied Parasol

*Neurothemis tullia*

- 中等大小翅膀带斑纹的白色蜻蜓。头部黑色，胸部及腹部白色，胸腹背面有两道黑纹。翅膀内侧黄色，中央透明，翅端黑色。
- Medium sized white dragonfly with marking wings. Black head, thorax and abdomen is white color with two black stripes on the back side. Yellow wings base, transparent in the middle, black wings edge.



© Fanghua Li

# 吕宋灰蜻

Marsh skimmer

*Orthetrum luzonicum*

- 中等大小的蓝灰色蜻蜓。头部浅蓝色，胸腹部蓝灰色，翅膀边缘蓝色。停歇时翅膀向前收起。
- Medium sized grey blue dragonfly. Light blue head, grey blue thorax and abdomen, blue wings edge. Wings collapse forward when stopping.



© Fanghua Li



# 赤褐灰蜻

Common Red Skimmer

*Orthetrum Pruinsum neglectum*

- 中等大小黑红相间的蜻蜓。头部及胸部黑色，腹部亮红色。翅痣黑色，停歇时翅膀向前收起。
- Medium sized black and red dragonfly. Black head and thorax, bright red abdomen. Black pterostigma, wings collapse forward when stopping.



# 狭腹灰蜻

Green Skimmer

*Orthetrum sabina sanina*

- 中等大小黑白相间的蜻蜓。头部及胸部黑白相间，具淡绿色条纹，腹部细长，黑白相间。
- Medium sized black and white dragonfly. The head and thorax is black and white with light green stripes, abdomen slim and black with white spots.





# 黄蜻

Wandering Glider  
*Pantala flavescens*

- 中等大小的淡黄色蜻蜓。头部白色，胸部淡黄色具黑色条纹，腹部淡黄色具白斑。
- Medium sized yellow dragonfly. White head, yellow thorax with black stripes, yellow abdomen with white spots.



# 斑丽翅蜻

Variegated Flutterer

*Rhyothemis variegata arria*

- 体形较小的花色蜻蜓。头部深红，胸部墨绿色，腹部黑色。翅膀主体黄色具黑斑。
- Small sized colorful dragonfly. Red head, dark green thorax, black abdomen. Yellow wings with several black stripes.



© Fanghua Li



# 晓褐蜻

Crimson Dropwing

*Trithemis aurora*

- 体形较小的粉色蜻蜓。头部红色，胸部和腹部均为粉色，翅膀红色。
- Small sized pink dragonfly. Red head, pink thorax and abdomen, red wings.



© Siu Tai Tsim

# 庆褐蜻

Indigo Dropwing

*Trithemis festiva*

- 体形较小的深蓝色蜻蜓。头部黑色，胸部深蓝具黑斑，腹部黑色，背面中央为蓝色。翅膀根部黑色，停歇时翅膀向前收起。
- Small sized dark blue dragonfly. Black head, dark blue thorax with black spots, black abdomen with one blue spot on the back side. Black wings base, wings collapse forward when stopping.







# 两栖篇

## Amphibian



# 北师港浸大校园两栖类 UIC Amphibians

中文名 Chinese Name	英文名 English Name	学名 Scientific Name
黑眶蟾蜍	Asian Common Toad	Bufo melanostictus
花狭口蛙	Asiatic Painted Frog	Kaloula pulchra pulchra
饰纹姬蛙	Ornate Pigmy Frog	Microhyla ornata
花姬蛙	Marbled Pigmy Frog	Microhyla pulchra
小弧斑姬蛙	Dark-sided Chorus Frog	Microhyla heymonsi
台北纤蛙	Taipei Frog	Hylarana taipehensis
沼蛙	Gunther's Frog	Rana guentheri
泽蛙	Paddy Frog; Terrestrial Frog	Fejervarya limnocharis
斑腿泛树蛙	Brown Tree Frog	Polypedates megacephalus



# 黑眶蟾蜍

Asian Common Toad

*Bufo melanostictus*

- 体型较大的灰绿色蟾蜍。背部灰绿凹凸不平，四肢较粗短呈灰色，眼部突出，眼周至吻部有有一圈黑色纹样。
- Big sized grey green toad. Rugged grey green back, thick and short grey limbs, eye prominent, black stripes surrounding eyes to snout.





# 花狭口蛙

Asiatic Painted Frog

*Kaloula pulchra*

- 体型较大的黄褐色蛙。背部主体深褐色，身侧有两道浅褐色斑带，腹部白色，四肢细而短，头部较小，呈黄色。
- Big sized brown frog. Dark brown back with two light color stripes on the body side, white abdomen, thin and short limbs, small yellow head.





# 小弧斑姬蛙

Dark-sided Chorus Frog

*Microhyla heymonsi*

- 体形较小的棕褐色蛙。背部主体中褐色，身体侧面具黑色条纹，腹部灰黑色。
- Small sized brown frog. Brown back with black stripes on body side, dark grey abdomen.





# 台北纤蛙

Taipei Slender Frog  
*Hylarana guentheri*

- 中小型蛙类。背部鲜绿到墨绿，偶有浅棕色，体侧具两条金黄色条纹。
- Small to medium sized frog. Green, or pale brown back with two golden-yellow stripes.





# 沼蛙

Gunther's Frog

*Hylarana guentheri*

- 体型较大的褐色蛙。背部浅棕色，体侧深棕色具白色条纹，四肢褐色具黑色斑点。
- Big sized brown frog. Brown back, dark brown body side with white stripe, brown limbs with black spots.





# 泽蛙

Paddy Frog; Terrestrial Frog  
*Fejervarya limnocharis*

- 体型较小的灰绿色蛙。吻部及背部主体橄榄绿色，具深色斑纹。腹部白色，头部较小。
- Small sized grey green frog. Grey green back and snout with dark color stripes, white abdomen, small head.





# 斑腿泛树蛙

Brown Tree Frog

*Polypedates megacephalus*

- 中等大小的灰褐色树蛙。背部主体灰褐色具“X”形深色斑，吻部及身体侧有黑色条纹。

- Medium sized taupe tree frog. Taupe back with X-shape dark color stripes, black stripes on snout and body side.



# Nature Observation Photo Guide

## 自然观察指南

致谢：参与物种数据调查的环境意识课程同学及UIC观鸟队同学

Acknowledgement : Participants from Environmental Awareness course and UIC Bird watching team members, help to survey and collect data for the photo guide.

---

文字编辑：庞星明，张欣雨

排版：庞星明，张欣雨

图片提供：詹肇泰，李芳华，陈子琦，陈相汀，庞星明

指导老师：詹肇泰，李芳华

主持单位：全人教育办公室环境发展中心

Editors: Xingming Pang, Xinyu Zhang

Layout: Xingming Pang, Xinyu Zhang

Photography: Siu Tai Tsim, Fanghua Li, Ziqi Chen, Xiangting Chen, Xingming Pang

Supervised by: Siu Tai Tsim, Fanghua Li

Organised by: Whole Person Education Office Environmental Development Centre

©本指南所有内容及图片之版权由环境发展中心或个别人士拥有，未经版权所有者的许可，不得翻印或转载。  
All content and photos of this guidebook copyrights reserved by Whole Person Education Office Environmental Development Centre or individuals. No parts of this guidebook may be produced, or transmitted in any form or by any means without permission of the copyright holders. All right reserved.





## 联系我们 Contact us

**Email: [wpe-edc@uic.edu.cn](mailto:wpe-edc@uic.edu.cn)**

---

如果您对校园生物或图鉴感兴趣，或者喜欢摄影，欢迎向我们提出修改建议或将您拍摄的物种照片发给我们，我们将持续更新和完善图鉴。

If you are interested in campus wildlife or the illustrated guide book, or like photography, you are welcome to make suggestions for modification or send us the photos of the species you observed. We will continue to update and improve the *Nature Observation Photo Guide*.

